

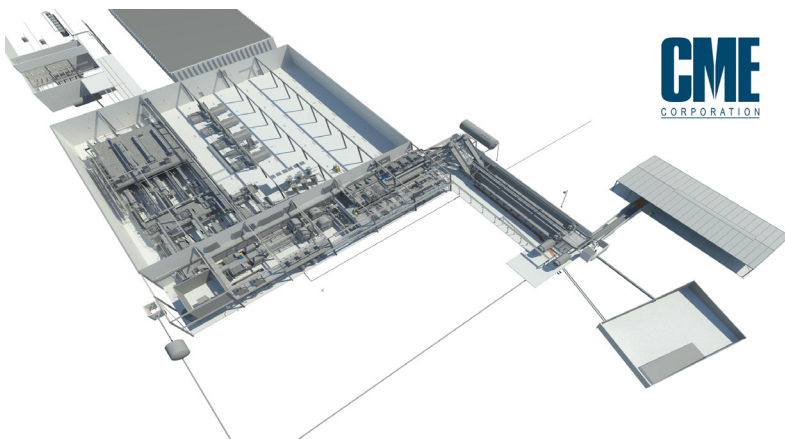


APPLICATION

- Following the Pre-Process Phase of a line install, Wells Brothers moved onto Phase II, the Inside Dicing Process Lines. Mostly used equipment from the older plant needed to be relocated with all services hooked up. These services included electrical, all piping, fabrication, installation and controls.

SOLUTION PROVIDED

- Well Brothers, Inc. provided enough manpower to meet a 12-week schedule to begin debug for the 2011 tomato season. This project was started Feb 21st with the installation piece completed by June 1st.
- The pictures show the empty building at the top right, the 3D Model (below) generated by the design/engineering firm CME out of Ft. Wayne, IN, and the completed project at the bottom right.



LONG-TERM OUTCOME

- End user now has a new partner for all aspects of installation services.
- Engineering firm has a new partner for other projects in the US.
- Wells Brothers obtained two new long-term customers for future projects.

Success Stories

TOMATO PLANT DICING LINE INSTALLATION PHASE II



**“Quick Turnkey Solutions From
a Cost-Effective Single Source Provider.”**

wbi@wellsbrothers.com

tel: 937.394.7559
fax: 937.394.7632

105 Shue Drive
Anna, Ohio 45302

wellsbrothers.com